

oakheart

£1,000 Per Month

Per Month

Gilberd Road, Colchester

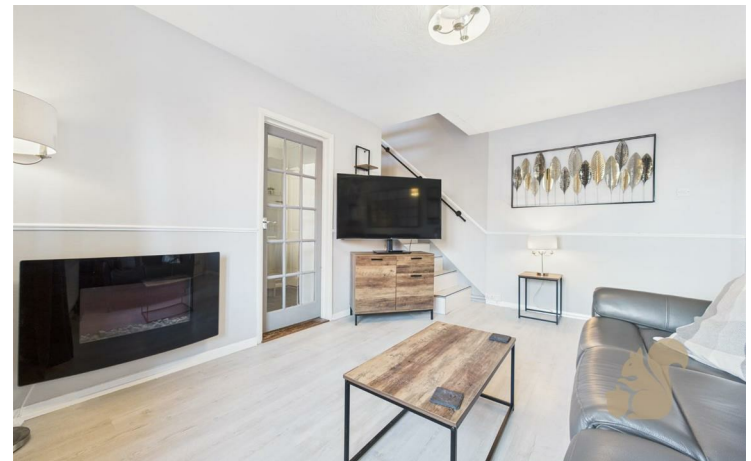


A well-presented two-bedroom home offering a modern finish throughout and a comfortable, inviting layout. The property features a cosy lounge, ideal for relaxing or entertaining, alongside a stylish, contemporary interior.

There is a spacious double bedroom complemented by a second bedroom, as well as a modern family bathroom finished to a good standard.

Externally, the property benefits from a single garage and off-road parking for one vehicle, providing convenience and practicality.

An excellent opportunity for those seeking a modern yet homely property with parking in a convenient location.
















**oakheart**

Local Authority:  
Colchester

Tenure:

Council Tax Band:  
B

### Energy Efficiency Rating

	Current	Potential
Very energy efficient - lower running costs		
(92 plus) <b>A</b>		<b>90</b>
(81-91) <b>B</b>		
(69-80) <b>C</b>	<b>70</b>	
(55-68) <b>D</b>		
(39-54) <b>E</b>		
(21-38) <b>F</b>		
(1-20) <b>G</b>		
Not energy efficient - higher running costs		
England & Wales		
EU Directive 2002/91/EC 		

Agents Note: Whilst every care has been taken to prepare these particulars, they are for guidance purposes only. All measurements are approximate and are for general guidance purposes only and whilst every care has been taken to ensure their accuracy, they should not be relied upon.

Oakheart Colchester - Lettings  
01206 803 303  
colchesterlettings@oakheart.co.uk  
2b Cotman Road, Colchester, Essex, CO3 4QJ

**oakheart**